

PATCHWAY PEOPLE

Patchway Pulls Together as a Community and Shows GREAT Community Spirit!

Patchway Residents have truly shown that Patchway is a great place to live with its unbelievable community spirit. From providing food parcels to having conversations with virtual strangers in the streets on our daily exercise.

Patchway People has heard of some amazing people in the Patchway Community going above and beyond. People such as Barbara Loveridge and Paige Josham who have been cooking meals



to be collected such as Sausage Casserole and Paige has left items outside of her home for people to come and collect. Southern Brooks Community partnership has been providing help with shopping, food parcels, prescriptions, well being support as well as signposting people. The Youth Team from "The Patch" have also provided art packs. Dave the Baker at the Parade has even been working on a Saturday morning so that the people of Patchway can have hot fresh bread daily. All the volunteers at the North Bristol Foodbank that operates out of St Chad's Church Hall who have helped to keep the foodbank operational. Sorry if I missed anyone out but this is just some of the great reasons that make Patchway a Great Place to Live! Also a huge thanks to all the key workers, NHS staff, Council Workers, Teachers, Lorry Drivers, Supermarket workers to name just a few. Patchway People all thank you! Both children and adults have been busy during lockdown to make Patchway a brighter, nicer place to live both designing and colouring in Rainbows. Well done to everyone they are dotted all around this issue and take a look in the middle pages and see if you can spot your Rainbow !

COMPETITION

This is your chance to win some money for your rainbow designs!

Patchway People will award the winners with:

1st Prize £25 - 2nd Prize £15 - 3rd Prize £10

An independent judge will decide who the winners are from all the pictures published in this issue and winners notified.



Our Foodbank outlet at St Chad's Church has been busy for the last few weeks supplying

the needs of local families in financial crisis, and supporting local Schools with their provision for families with children on free school meals. The rules on social distancing have meant a cap on the number of volunteers working in close proximity, which in turn limited the number of people on site. Thank you to the fantastic team at St Chad's who have kept going, and to the brilliant support in our community to support this work. Going forward we intend to have a minimal presence at St Chad's on a Tuesday from 12-2pm to receive donations. We will then sort them and prep them for use. For the coming weeks it will not be possible to bring a voucher to St Chad's and receive food in return. Rather, the warehouse will prep a parcel for you and it will then be delivered to your door. This will mean your supporting agency either needs to send an e-voucher to the warehouse or you take a photo of your existing voucher and send that to [in-fo@northbristol.foodbank.org.uk](mailto:info@northbristol.foodbank.org.uk)

It might take us a bit of time to fine tune this to work smoothly, so thank you in advance for your understanding.

MESSAGE FROM ST CHAD'S CHURCH TO THE PEOPLE OF PATCHWAY

It is strange living through these unprecedented times without the close friendship and support of our Church family. Since the guidance about not gathering we have been unable to meet as a Church Family. However, we are working to still support each other keep in touch. If you are on Facebook then you would be welcome to find the St Chad's Patchway page where we update with news and have times of prayer and worship that you can follow "live" if you wish. We also have an email for prayer requests stchadsprayers@gmail.com - this is a confidential email address with only Clergy able to access it - but we will happily pray for you.

We also have videos on YouTube which you can watch. We post these at https://www.youtube.com/channel/UCbyMiIDXqFCMBq5_bjVj9ZQ

It is important that we keep in touch as a neighbourhood. If you would like to contact me then please email me at revh.jameson@gmail.com or 0117 370 8279.

God bless Revd Howard Jameson

Priest in Charge





MAMAS BRISTOL

During this uncertain time for so many mamas Bristol had to make an important decision on how best to make sure our community continued to feel supported but could follow the government guidelines

and stay safe and well. Mamas Bristol community group has thrived and grown into an online community platform that provides not only the support to people with dependants to lower and reduce the costs of raising a family, and helping save waste, but it creates community spirit. During this global pandemic it has forced businesses to close, people to lose their jobs and it has forced schools to close to keep people safe. Now more so than ever before support online has become invaluable. We as a group decided something still needed to be done to help those who needed help, to support professionals supporting those who are most vulnerable, all while playing an important part in the Patchway community.

The online platform still provides a space for people to request any urgent help they need, its become a place for advice and a positive space for anyone to feel welcome, feel they can ask for help, feel they can ask us where they can get further assistance. Not only that but with our previous fundraising and recent fundraising requests we were able to start spending some of those funds on essential food supplies, to those who fall on hard times. Every now and then, just about everyone needs a helping hand and we feel we are a group that can help to alleviate that pressure, be a stepping stone for families or member of our community who might need longer term help, waiting for benefit payments and coming to terms with how a family budget changes dramatically during these times. Mamas Bristol have been working with various people across the community who are also supporting us. A few times a week, Paige has been donated items from a local store who normally donate to our community fridge's. She has been advertising a safe collection point from a front garden, making sure this food isn't going to waste. In two weeks we have been able to build and redistribute just shy of FIFTY essential food parcels, going to those who need it not only here in Patchway, but stretched right across South Glos and Bristol. Providing families with enough food to make about 4 meals, and provide them with breakfast and some treats too.

We have been making fresh, home cooked meals ready to go in takeaway boxes for those who need it, now by working with others in the community we have seen just under ONE HUNDRED meals cooked freshly and redistributed. And finally, we have been donated on occasions sandwiches, salads and lunch items that could no longer be sold, we have taken these and given them to some keyworkers in the area, we have donated to Patchway police station, Patchway fire station, Southmead ED, and some workers of Southmead hospital on further wards such as decontamination and even those who work in distribution. We are very proud of the achievements so far during this uncertain time for those in our community, but it doesn't stop there. We have been supporting and doing community work for just over two years now, and we have full intentions on continuing to do as much as we can. We urge anyone in our community that needs some support to please search for our Facebook group 'Mama's: Swaps & Freebies (Bristol HQ)' where you can contact any of the admins for further assistance and if you don't have social media we can also be contacted by email on:

mamasbristol@outlook.com

Summer Sudoku



Every row, column and mini-grid must contain the letters
S U N B A T H E R.
Don't guess - use logic.

		T	H	E	N	R		
	E	U	R		B	H	T	
		E		N		U		
B	T	H		U		S	R	N
		A		S		B		
	H	S	A		T	N	U	
		R	N	B	S	E		

CARERS SUPPORT CENTRE

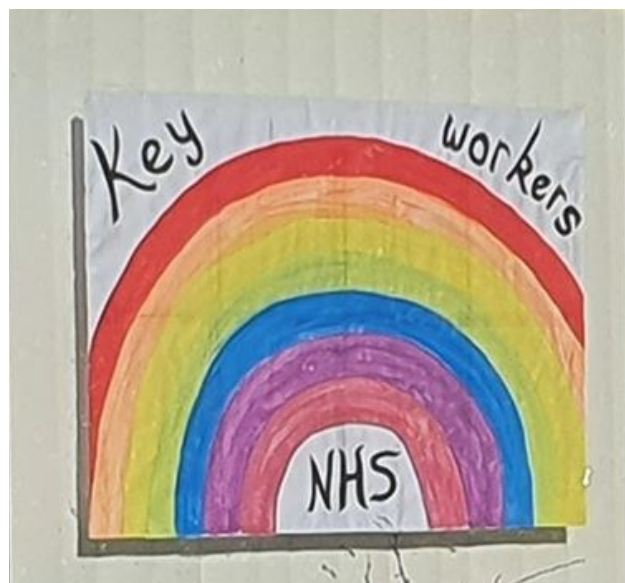
Are you looking after someone through COVID-19 ? Families, and neighbours often provide crucial care for someone who couldn't manage without their help. You could be caring for a relative, partner or friend who is ill , frail, disabled or has mental health or substance misuse problems. In this worrying time Carers Support Centre urges carers to reach out to their support systems. All carers must consider what their contingency plans are in the event of them contracting COVID-19 and being unable to provide care. Is there someone who can support you if this becomes necessary? Talk to family and

friends about this, to help reduce anxiety during this uncertain time.

It has never been more important to

have a Carers Emergency Card. This shows your name, a unique identification number and an emergency phone number. If you have an accident/emergency or are taken seriously ill , the card can be used to alert a 24hour emergency call centre that the person you care for needs help. Steps are then taken to ensure the safety of the person cared for. If you look after someone and you don't have a Carers Emergency Card, make sure you register for one now . Register for a card on the Carers Support Centre website: <https://www.carerssupportcentre.org.uk/our-services/carers-emergency-card/>

Carers Support Centre's wellbeing service is also here for local carers. It aims to give emotional support and help you become more resilient . This is a difficult and testing time for carers. The wellbeing service includes befriending, mentoring and counselling. It is free, confidential and delivered by phone. Through the befriending service the charity will match you with a trained volunteer, who can provide conversations, companionship, and emotional support. Contact Maria on 07526 850772 If you need to talk about



Marlwood's Got Talent



On Friday 13 March, Marlwood's Got Talent was back for its second year and it was bigger and better than ever. Local Patchway resident and Marlwood student, Henry Tombs, with his friend Megan Elder were one of eighteen acts who performed before a packed out hall (photo below) The audience were treated to solos, piano-singer duets, drumming, dances, duets, self-composed piano per-



formances and a show-stopping recorder performance of Mamma Mia by Mr Dyer and Miss Staley, dressed in costumes borrowed from Marlwood's extensive theatrical wardrobe! The event was judged by teachers Mr Hulin and Mr Richards who made an excellent double-act. The evening was hosted once again by the amazing Paris Troy who supported and encouraged the acts and entertained the audience with his quick wit. The judges award went to Mabel and Hattie who performed a beautiful and expressive dance to Sia's *Bird Set Free*. (photo on the right) The audience vote was won by Megan and Henry who performed George Ezra's *Budapest* with Megan on vocals and Henry guitar. Both sets of winners were given glass trophies With amazing performances, refreshments provided by the Friends of Marlwood and raffle with generous prizes , the audience left buzzing with happiness and with smiles on their faces. There is no doubt that Marlwood has got talent and the love of the Marlwood community continues to lift everyone's spirits in these difficult global times.

Written by Saffia Farr



Patchway Twinning Update

In May, The Patchway Twinning Association were due to welcome German children and their teachers from our twin town Gauting. However, due to the COVID-19 pandemic this trip has to be postponed which is of great sadness to all of us that were involved.

However, in these strange times we do have some very positive news from the Twinning Association. We were pleased to discover the opening of Gauting Road in Charlton Hayes. This means that Patchway now has two roads named after our twin towns, namely Clermont Close and now, Gauting Road. This is of great significance to the Town as a whole and is something that we cannot wait to share with our Twinning Partners.

You can find our more information regarding the Twinning Association by visiting our web-site at www.patchway-twinning.org.uk



Brabazon shortlisted for prestigious Housing Design Award

The first phase of new homes at [Brabazon](http://www.brabazon.co.uk) – the new neighbourhood being built on the site of the historic former Filton Airfield – has been shortlisted for the most prestigious and long-standing awards for residential development in the country: The Housing Design Awards. The Housing Design Awards are unique in that they are promoted by all 5 major institutions for property professionals*. Originally launched in 1948, the Awards began just a year before the pioneering aeroplane which gives Brabazon its name first took to the skies. The new homes at Brabazon have been designed by award-winning architects Feilden Clegg Bradley Studios. Based in Bath, the firm is responsible for some of the most innovative and high-profile architectural projects in the South West, including the restoration of Bath Abbey. The homes at Brabazon are more spacious than average, with generous rooms, oversized windows and soaring double-height ceilings in selected homes. Not only that, but the architecture is also designed to reflect the heritage of the historic former Airfield. The homes are built of solid red brick, matching the material of the listed aircraft hangar 16U which will also be restored as part of the first phase. The rooflines of the houses also echo the profile of an airplane's tail-fin, as well as orienting the solar panels to the South to maximise their energy efficiency. Construction of their homes was well underway before the appearance of Covid-19. However, YTL Developments still anticipate that the first new residents will move into their new homes in 2021.

To find out more and register your interest, please visit www.brabazon.co.uk/register



Word Search - Stay Safe this Summer



COMMUNITY
COVID
CRAFTS
FAMILY
FOOD
FUN
HEALTH
HOME
KEY WORKERS
LOVE

MEMORIES
NHS
PATCHWAY
PEOPLE
SAFE
SMILE
SUMMER
SUPPORT
THANK YOU
TOGETHER



PATCHWAY LIBRARY

Your online library is still open!

Whilst Patchway library remains closed due to COVID-19, our online library remains open 24/7 so if you are in need of a constantly updated supply of reading material to match your interests, delivered straight to your screen, it's all yours with free South Gloucestershire library membership through the LibrariesWest partnership.

Download the latest issues of 100+ bestselling magazines (including GQ, Heat, Attitude, Best, Top Gear, Mojo, Hello! ... and more); over 1500 eComics for all ages including comics from IDW, Marvel, Disney and Dark Horse, plus free eBooks and eAudiobooks



Get started at bit.ly/d1gitalLibraryServices

Not a member? Don't worry, you can join online now at bit.ly/joinLW – membership is free. You will receive a Temporary ID number which will work for our digital services right away.

Where the form asks "Pin" and next "Re-enter Pin" it is asking you to choose your own 4-digit PIN and then to re-enter it to confirm your choice. Please provide your email address when you join online, as this will give you more control of your account and allow you to reset your PIN easily if you forget it

Already a library member? Get started straight away with your membership number as printed on your library card. Don't worry if you have books at

home on loan – all loans have been extended until 1 July at the earliest and any charges incurred due to coronavirus will be cleared.



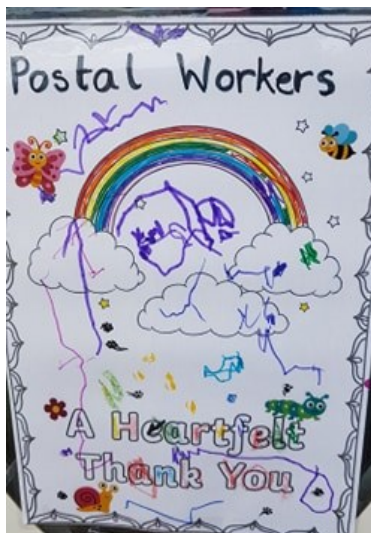
[Lego Club Online](#)

Look out on Facebook every Monday for Lego Club online, make a model on the theme for the week and

share it with us! [Facebook.com/sgloslibraries](https://facebook.com/sgloslibraries)







WEST OF ENGLAND CIVIL SOCIETY PARTNERSHIP **CIC COVID-19 Response**

As part of the response to the COVID-19 outbreak across the Bristol, North Somerset and South Gloucestershire area, the Voluntary Community and Social Enterprise sector (VCSE) is working in partnership with the Local Authorities, NHS Clinical Commissioning Group and Sirona care & health in providing a response from the grass root community groups, with the local authorities and through to the area-wide Command structures. Starting at a locality level we will be working with Wellspring Settlement, Southmead Development Trust, Knowle West Healthy Living Centre, BS3 Community, the Wellbeing Collective in North Somerset and Southern Brooks, who will provide reach into, and intelligence from their local communities in addition to utilising their Social Prescribing workers to make links into the GPs surgeries.

Links will be made at this level to support the new and emerging mutual aid groups who will provide community and street level volunteers. Working with each local council alongside other statutory partners, the VCSE will be represented by Vocsur, VANS and CVS South Gloucestershire at three incident control centres. This local support and coordination function will allow appropriate decision making and actions to be taken which respond to each of the areas unique needs and support the health and care system to meet the needs of people leaving hospital as well as those who need support in their communities. Strategy and oversight for this local action across the area is provided by the West of England Civil Society Partnership whose role it is to provide voice and influence for the VCSE by being part of the VCSE "cell" within the Silver Command of the local emergency organisational structure set up when the outbreak started.



All of the voluntary sector partners are committed to working with and for their local communities in this difficult time and are proud to be part of the local response.

Southern Brooks supported people over the Easter Bank Holiday weekend between 8am and 8pm, every day. We provided practical support with food and prescription collections, linked people into their local mutual aid groups where possible and were a friendly voice at the end of the phone for people who wanted someone to talk with.

We distributed fresh fruit and dairy produce to people in Patchway, and the medical team at Southmead A&E were delighted to be given the leftovers. We're looking at our opening hours for next week, to make sure we are available when people most need us. To refer please contact 07773 209943 or email communitysupport@southernbrooks.org.uk.



EASTER COMPETITION

A big thank you and well done to Mike's Window Cleaning Service who had organised a Easter Competition. Our photos below show the winner Reece and the runner up entries who all received an Easter Prize.





Rainbow fruit skewers



CHARLTON HAYES NEWS**OUR BIG DAY WILL COME :**

Until the Coronavirus escalated into the pandemic that it is today ReACH had been busy planning for a one -off amazing Community BIG DAY Event to have been held in May to celebrate who we are, where we came from and where we are going. This was intrinsically about and for all the residents of Charlton Hayes but has developed into a celebration of the History, Heritage and Future of the whole area of ours including Patchway and Filton. So it was intended to be a fun, family affair for everybody including children with games to play, prizes to be won and lots of mega colouring-in to do . Also there was the chance to see a unique one off hand coloured huge mural to be unveiled that day called:

Revisiting the Past and looking forward to the Future

However while the Big Day in May had to be postponed it is not cancelled and will be held later in the year when we can also celebrate the end of the virus and the time to both reflect on the past and move onto the future. Which is happening now !

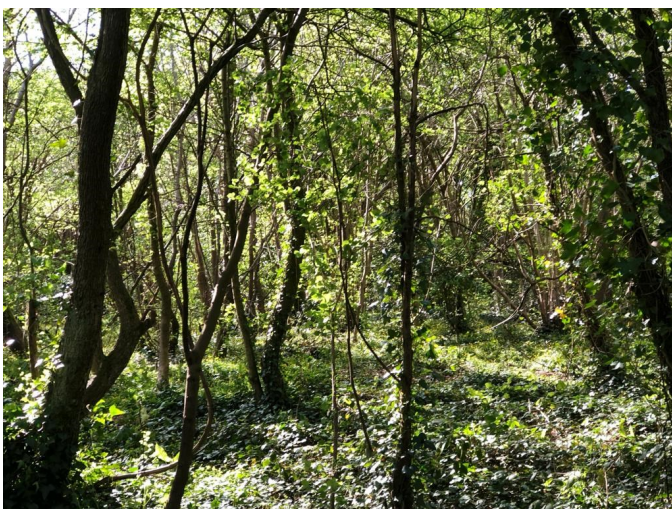
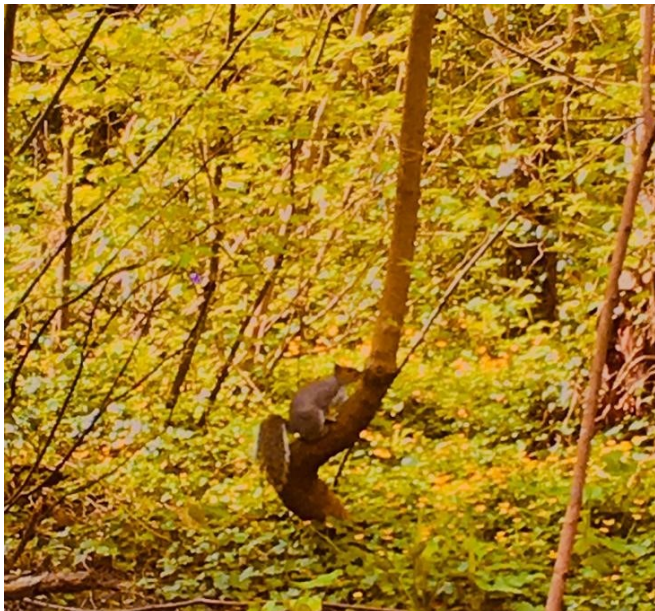
The production of this mega mural is still happening now!! So to help ReACH put the finishing touches to this great community event we would like to hear from both volunteers to help on the day and also to hear from ordinary people who lived in this locale and remember the hey days of our unique and amazing aviation history –with the likes of Rolls Royce and the Bristol Aviation Company We want to celebrate to help all those who helped to build this larger community into the place that it is. You are our past. We salute you and we want to show you the future that you have helped to build. **So if that is you in Patchway or anywhere in South Gloucestershire please contact us in-fo@charltonhayes.org.uk or call Allan Watson Chair of ReACH on 0117 370 2378 to tell us your story .**



GORSE COVERT IN SPRING TIME



Beautiful photos taken by local Patchway Resident Henry Toombs capturing spring time in Gorse Covert



DISCOVER A WILDER PATCHWAY



Female Bullfinch soaking up the sunset, The Tumps, March 2020

Ways to enjoy nature this Spring with Patchway Conservation Group

In these strange times we're heartened to see each other use our local green spaces for exercise, fresh air, and to connect with the natural world. Some of us may even be surprised to discover something new and unexpected... a bird song we've never heard before, lifting our spirits (or waking us up!), the flash of an exotic looking butterfly fluttering through our path, or the hum of a queen bumblebee, awakening from her winter slumber. We've delighted in so many wildlife encounters just over the past few weeks - bullfinches feeding on spring buds in The Tumps, tadpoles and newts along Patchway Greenway, pipistrelle bats over Aztec West, hosts of orange-tip, holly blue and speckled wood butterflies in Eagle Meadow, and of course the magnificent display of native bluebells in Gorse Covert. What have you discovered? As Spring blossoms and the traffic quietens, perhaps each of us has let a little more nature into our lives. And why not? Spending time in nature is proven to ease stress, regulate emotions, boost our immune system and improve both our physical and mental health. We need nature now more than ever - we are part of it - and sometimes the natural world needs a helping hand from us. If you didn't already know Patchway Conservation Group was started many years ago in the late 80's, to help people to get to know and care for our local green spaces.

DISCOVER A WILDER PATCHWAY

to protect and enhance what we have, for all of Patchway to enjoy. Now after a few years of rest, more and more residents are helping to care for the amazing wildlife and green spaces that we have on our doorstep. As the group reforms and begins to grow, we'd love to hear about why Patchway's green spaces are important to you, and how you might be able to help. For now we've collected together a few ideas of how you can enjoy nature this Spring until we can meet again...

Our Spring Top Tips:

Let a patch of your lawn loose! Let it grow wild and see what birds and insects you attract to your garden.

Sow or buy some native wildflower seeds - great for our drastically declining pollinating insects and our beloved bumblebees. When the flowers go to seed you may even spot a charm of goldfinches nibbling the dead seed heads. You can grow wildflowers in a pot or window box too. Invest in plants grown from locally sourced seeds from Avon Wildlife Trust reserves here - <https://www.growwilder.co.uk/>

Create a log pile or a bug hotel by gathering up sticks, leaves, dried grass and pine cones to attract beneficial insects into your garden, or maybe a hedgehog!

Get up and out for a dawn chorus walk and hear Patchway come alive with the sound of bird song. Just before dawn at around 5.15am is perfect, it's International Dawn Chorus Day on the 3rd of May.

Look up! We have many birds of prey including sparrowhawks and buzzards in the day to tawny owls at night! (Did you know the Twit Twoo sound isn't one owl? This sound is actually made by both a male and female owl calling to each other - the female makes a 'ke-wick' sound and the male answers with something more like 'hoo-hoo-oo'.)

Start a nature journal: draw, write or take photographs of things that inspire you everyday. You don't need a garden for this, it could be a flower you've seen on a walk, or the formation of the clouds. You can even make paints and dyes using leaves and flowers.

Join an online group and share what you see. 'The Self Isolating Bird Club' is an online group on Facebook and Twitter, where people share what birds they can see from their window. It can also help you learn new skills and identify different birds, as well as feel more connected to others. can you identify?

Lay off the slug pellets, sprays and poisons and try and bring natural balance back to your garden! Think carefully before poisoning rodents or call in professionals, poisoned rats and mice are eaten by much of our local wildlife including owls, and unfortunately this has had catastrophic effects. A small wildlife pond or log pile can help attract slug and snail loving frogs, thrushes and hedgehogs! Just make sure if you build a pond it has a sloping beach like side for easy access and exit.

For more hints and tips about building wildlife friendly gardens and communities The Wildlife Trusts have a website brimming with plenty of FREE how to guides (great for keeping the children entertained too!) <https://www.wildlifetrusts.org/looking-after-yourself-and-nature>

We're just starting and learning how to grow as a group, if you fancy finding out more about Patchway's marvellous green spaces, or would like to get involved, or share your wildlife encounters you can find us: Facebook: Patchway Conservation Group Page Twitter: @WildPatchway

Instagram: @PatchwayConservationGroup

or email

us: patchwayconservationgroup@gmail.com

We'd love to hear from you! :) Pssssst! A message to the children (& young-hearted adults too)...Did you know that you can find every character from 'The Gruffalo' living right here in Patchway? Wow! Although us grown-ups have never seen the Gruffalo we have bumped into - mouse, fox, owl and snake! Keep your eyes and ears peeled for Gruffalo going's on...



Native Bluebells, Gorse Covert, April 2020



Patchway Town Council
Rodway Road, Patchway, Bristol, BS34 5DQ
Telephone: 01454 868 530
Email: office@patchwaytowncouncil.gov.uk
www.patchwaytowncouncil.gov.uk



Town Council News

Patchway Town Council Community Award Scheme

Patchway Town Council are very pleased to announce that we now have a formal awards scheme where the residents can nominate their 'Community Heroes' and the Council decides if they are deserving winners of this prestigious award. The winners to date have received a certificate signed by the Town Clerk and the Chairman. If anyone wishes to nominate a resident of Patchway, they should contact office@patchwaytowncouncil.gov.uk in the first instance.

COVID-19 Support for Residents

Patchway Town Council have posted a brochure out to most households in Patchway and Charlton Hayes detailing how the council can help the vulnerable at this very strange time. We have also have a support page, updated every day, with new updates regarding COVID-19 and measures we are taking in the town to ensure safety for all of our residents. We are here to support all residents as well as the numerous community groups that have done a sterling job. Please stay home and stay safe.

Updates on Town Council Projects

Patchway Town Council have now completed the tendering project for the 3G pitch and new cricket nets at Scott Park and will be awarding the contract imminently. Details of this when it is awarded will be on our website. The Patchway Community Centre project is progressing very well and the council will be aiming to head out to tender in the next month or so. This will give Patchway and Charlton Hayes an modern and enhanced community centre for all to use.

We Want to Hear From You

Patchway Town Council want's to hear ideas and suggestions from residents about what they would like to see or have happening in Patchway. If you have any upcoming projects or any ideas that you think the Town Council could do in our community then please let us know. Please send all suggestions to office@patchwaytowncouncil.gov.uk or ring 01454 868 530.

Coniston Ward: Cllr Jon Butler, Cllr Ken Dando, Cllr Elaine Martin, Cllr George Pykov, Cllr Isobel Walker and Cllr R Walker.

Callicroft Ward: Cllr Ted Bathe-Taylor, Cllr Jo Buddharaju, Cllr Patrick Cottrell, Cllr Eric Gordon, Cllr Brian Hopkinson, Cllr Roger Loveridge, Cllr Sam Scott, Cllr Toni Scott, Cllr Sanjay Shambhu.

Cllr Shambhu, Cllr Buddharaju and Cllr Hopkinson represent the Charlton and Cribbs Ward of South Gloucestershire Council. Cllr S. Scott represents the Coniston Ward of South Gloucestershire Council.

Town Clerk : Mrs Linda Squire